

COTTON IN THE EARLY 1900S



CENTER FOR ARKANSAS
HISTORY AND CULTURE
UNIVERSITY OF ARKANSAS AT LITTLE ROCK

Cotton in the Early 1900s

Introduction

Cotton has been one of the most important agricultural crops in the history of the US economy. After the invention of the cotton gin in the late 1700s, cotton replaced tobacco as the number one wealth-producing crop in the United States. The significance of cotton to the US economy and politics is captured in the phrase that was used frequently in the 1800s, especially by Americans in the South, when they referred to cotton as “King Cotton.”

In order to grow, cotton needs a hot and humid climate. That is why cotton has been cultivated in the United States mostly in the Southern states. Before the Civil War, work needed to cultivate cotton was done largely by enslaved African Americans. The enslaved were the primary producers of the Southern wealth tied to cotton production. But the North benefited from the enslaved labor too. With the rapid development of industrialization in the North, cotton produced by slaves in the South was often processed and turned into cotton fabric in Northern factories. Northern ports also became trade centers, from which American cotton and cotton products were shipped to other countries.

After the Civil War, the abolition of slavery, technological advancements, and changing consumer needs all shaped new trends in cotton production. In this activity, you will examine four photos that document the process of cotton production in Arkansas in the early 20th century (1900s). Until today, Arkansas remains one of the largest cotton-producing states in the United States.

COTTON IN THE EARLY 1900S



Photo 1: Workers picking cotton, not dated/ca. early 20th century (Agriculture photograph collection, ca. 1893-1941)

Questions:

1. Where and when was Photo 1 taken? See the photo caption for more information.
2. Who are the individuals in Photo 1? Describe the individuals in this photo. What are they doing?
3. Why do you think there are so many children in this photo? What are the children doing in the cotton field? How old do you think the children in the photo are?
4. Are the workers in Photo 1 using any machines?
5. Based on this photo, who cultivated (planted, weeded, watered, picked, etc.) cotton in Arkansas in the early 1900s?
6. Are the workers in Photo 1 typical or unique cotton producers in Arkansas in the late 1800s and early 1900s? See resources listed in "Introduction" for more information.

COTTON IN THE EARLY 1900S



CENTER FOR ARKANSAS
HISTORY AND CULTURE
UNIVERSITY OF ARKANSAS AT LITTLE ROCK

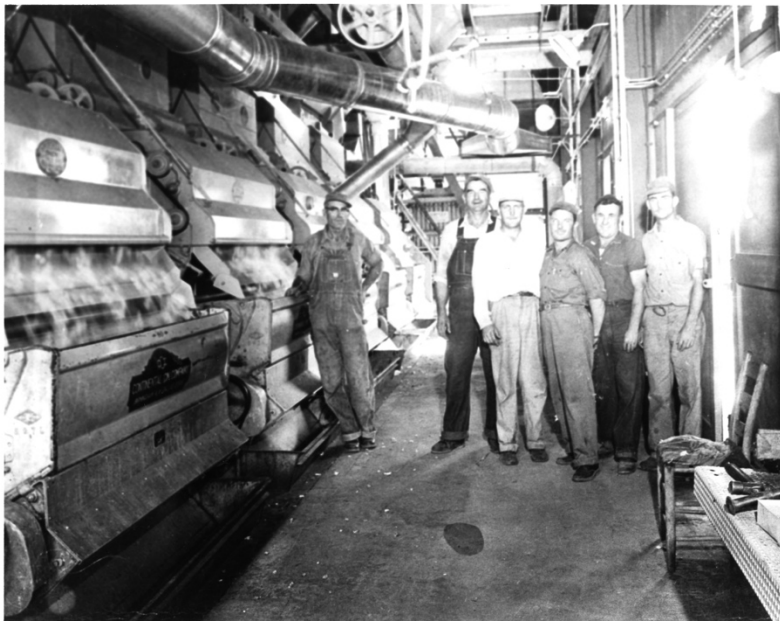


Photo 2: Etowah Gin Company workers (Etowah, AR), ca. 1912 (Morris Family photograph collection, ca. 1912)

Questions:

1. Where and when was Photo 2 taken? See the photo caption for more information.
2. Who are the individuals in Photo 2? Describe the individuals in Photo 2.
3. What are the machines in the photo?
4. For what is a *cotton gin* used (what does it do)?
5. Are there any children in Photo 2?

COTTON IN THE EARLY 1900S



CENTER FOR ARKANSAS
HISTORY AND CULTURE
UNIVERSITY OF ARKANSAS AT LITTLE ROCK



Photo 3: Cotton shipment in Jackson County, ca. 1900 (Rivers, Landings, and Riverboats Photograph Collection, ca. 1880-1927)



Photo 4: Train cars are loaded with 319 bales of cotton in Lee County, ca. 1910-1920 (Agriculture photograph collection, ca. 1893-1941)

COTTON IN THE EARLY 1900S



CENTER FOR ARKANSAS
HISTORY AND CULTURE
UNIVERSITY OF ARKANSAS AT LITTLE ROCK

Questions:

1. Based on Photos 3 and 4, what types of transportation were used to transport Arkansas cotton in the early 20th century?
2. Why do you think both ships and trains were used to transport Arkansas cotton?

Comparative Questions:

1. Think of the process of cotton production in Arkansas in the early 20th century as documented in the four photos that you just examined. Where did this process begin? Who produced and picked cotton (raw material)?
2. Where and how was cotton processed? Who processed cotton?
3. How was the processed cotton in the form of bales transported?
4. How were people involved in the process of cotton production? Who worked on land and who operated machines used for processing and transportation?
5. How was technology involved in the process of cotton production?