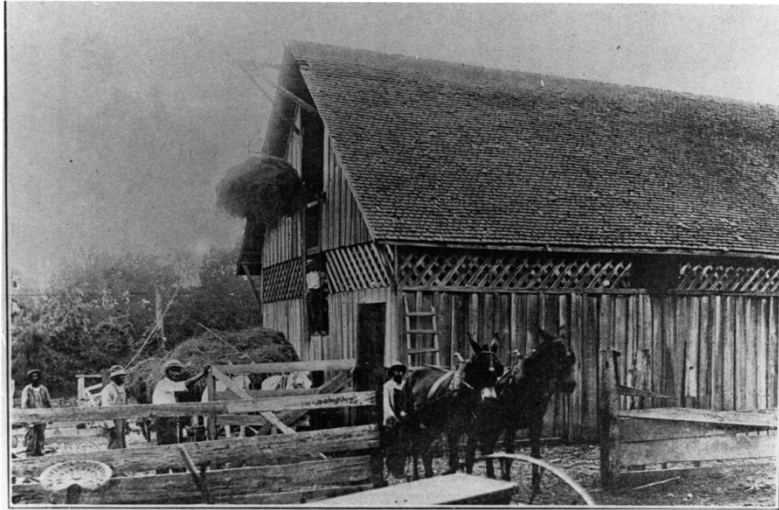


# BIG FARMS IN THE EARLY 20TH CENTURY



UNLOADING SECOND CUTTING OF ALFALFA, JUNE 15, 1917.

Photo 1: Workers at Scott Bond's farm unloading alfalfa, ca. 1917 (Scott Bond photograph collection, 1893-1917)



VIEW ON ONE OF SCOTT BOND'S COTTON FIELDS IN 1917.

Photo 2: Scott Bond's farm, ca. 1917 (Scott Bond photograph collection, 1893-1917)

## BIG FARMS IN THE EARLY 20TH CENTURY



SCOTT BOND MAKING A START IN LIFE.

Photo 3: Scott Bond plowing with mule, ca. 1917 (Scott Bond photograph collection, 1893-1917)



FARMERS AT SCOTT BOND'S GIN 1916.

Photo 4: Scott Bond's gin, ca. 1916 (Scott Bond photograph collection, 1893-1917)

## BIG FARMS IN THE EARLY 20TH CENTURY



CENTER FOR ARKANSAS  
HISTORY AND CULTURE  
UNIVERSITY OF ARKANSAS AT LITTLE ROCK



GIN WITH COTTON READY FOR SHIPPING.

Photo 5: Scott Bond's gin with cotton ready for shipping, ca. 1917 (Scott Bond photograph collection, 1893-1917)

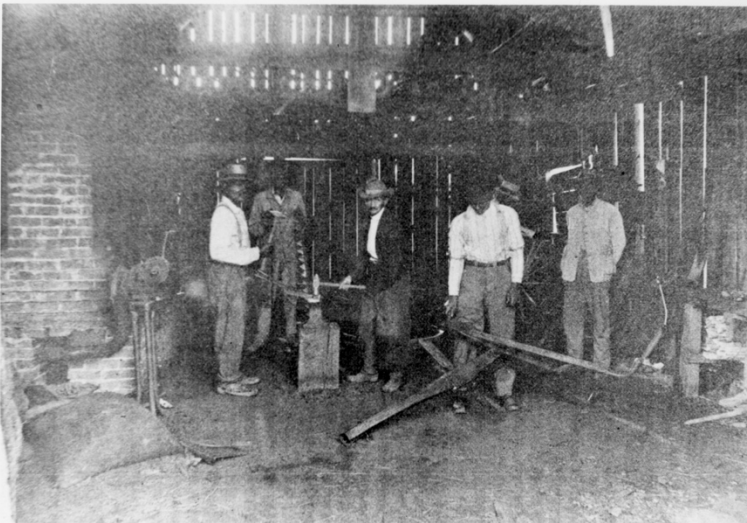


Photo 6: Scott Bond's blacksmith shop, ca. 1917 (Scott Bond photograph collection, 1893-1917)



## BIG FARMS IN THE EARLY 20TH CENTURY



CENTER FOR ARKANSAS  
HISTORY AND CULTURE  
UNIVERSITY OF ARKANSAS AT LITTLE ROCK

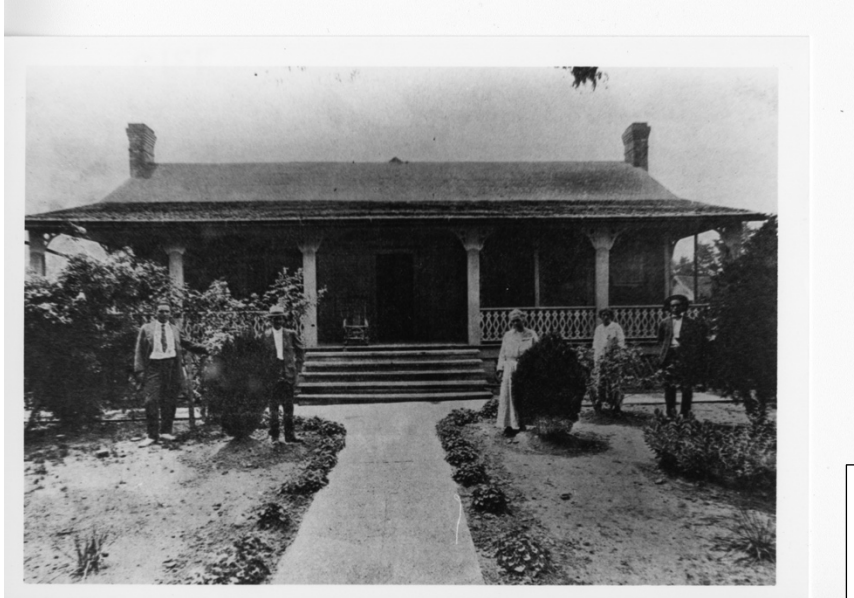


Photo 7: The Cedars, Scott Bond's home in Madison, Arkansas, ca. 1917 (Scott Bond photograph collection, 1893-1917)



Photo 8: Scott Bond and family in garden at home, ca. 1917 (Scott Bond photograph collection, 1893-1917)

## BIG FARMS IN THE EARLY 20TH CENTURY



CENTER FOR ARKANSAS  
HISTORY AND CULTURE  
UNIVERSITY OF ARKANSAS AT LITTLE ROCK

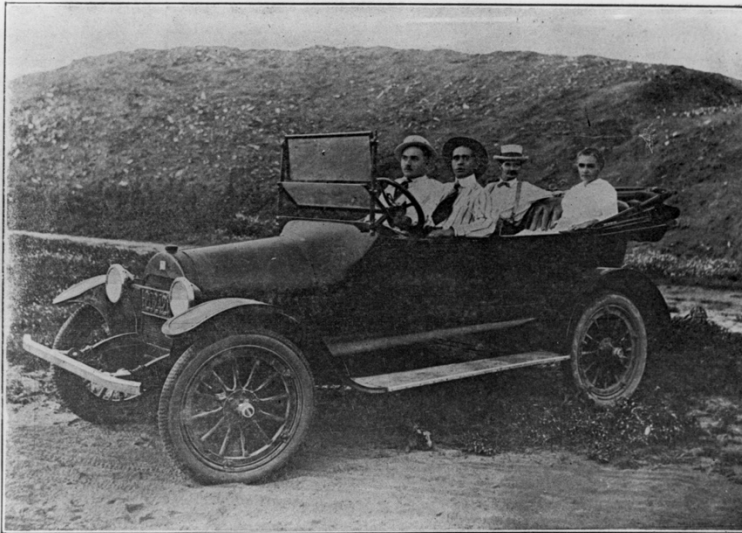


Photo 9: Bond family sit in car, including Scott and wife, Magnolia, in back and sons, Ulysses and Theophilus, in front, ca. 1917 (Scott Bond photograph collection, 1893-1917)



Photo 10: Scott Bond's office, ca. 1917 (Scott Bond photograph collection, 1893-1917)