

CHRONOLOGY (SCHOOLS AND FAMILY)



Chronology (Schools and Family)

Introduction

In this activity, you will look at old photos of different schools and families. These photos will help us learn how schools and families have changed over time. We will also compare schools and families in the past to schools and families today.

Questions (Schools):

- Look at each pair of photos and compare them.

Or

- Compare any selected photos to each other.

Or

- Compare the school building and students from each photo (or selected photos) to your school building and students in your school.

When you describe the photos, answer the following questions:

1. Which photo is older (if you compare two photos)?
2. Is the school in the photo big or small?
3. Is the school building in the photo like your school or different?
4. How many students are in the photo? Are the students in the photo all the students that go to this school?
5. How old could the students be?
6. What are the students wearing?
7. If you compare two photos, are the schools and students in the photos different or similar?
8. Do the students in the photo look like students in your school?

CHRONOLOGY (SCHOOLS AND FAMILY)



CENTER FOR ARKANSAS
HISTORY AND CULTURE
UNIVERSITY OF ARKANSAS AT LITTLE ROCK



Photo 1: School group probably in Crawford County or Madison County, 1880s (Education Photograph Collection)



Photo 2: School group in Uniontown, 1910 (Education photograph collection, ca. 1880-1930)

CHRONOLOGY (SCHOOLS AND FAMILY)



CENTER FOR ARKANSAS
HISTORY AND CULTURE
UNIVERSITY OF ARKANSAS AT LITTLE ROCK



Photo 3: School children at Belle Point School in Fort Smith, 1890-1895 (Education photograph collection, ca. 1880-1930)



Photo 4: Rubeye Nichols Lambert with Lambert Wing School students in Sheridan, 1938 (African Americans photograph collection, ca. 1890-1954)

CHRONOLOGY (SCHOOLS AND FAMILY)



Photo 5: Students stand outside of school for African American children in Fayetteville, Arkansas, not dated, ca. 1870s-1890s (F. P. Rose Photograph Collection, 1820-1961)



Photo 6: First and second grade class portrait in Huntington, 1926 (Education photograph collection, ca. 1880-1930)

CHRONOLOGY (SCHOOLS AND FAMILY)



Questions (Families):

- Look at each pair of photos and compare them.

Or

- Compare any selected photos to each other.

Or

- Compare the family from each photo (or selected photos) to your family and/or a family that you know (your neighbors, your friend's family, your classmate's family, etc.).

When you describe the photos, answer the following questions:

1. Which photo is older (if you compare two photos)?
2. Who is in the photo?
3. What is the family in the photo doing?
4. What is the family in the photo wearing?
5. How are individuals in the photo related to each other?
6. Does the family in the photo look like your family or a family that you know?

CHRONOLOGY (SCHOOLS AND FAMILY)



Photo 1: The Edward Nichols family pose for a portrait. Individuals include: back row, left to right: Robert, Rubye, Calvin, Carri, Edward, Jr., J. W; front row, left to right: Floyd, Gladys, Lena, Edward, Sr., Lloyd, child on small stool, Lucy, Dal Royce sitting on Lucy's lap, and Cleo, 1930s (African Americans photograph collection, ca. 1890-1954)



Photo 2: A portrait of the Rockefeller family (extended) gathered at Christmas., 1955 (Winthrop Rockefeller Collection)

CHRONOLOGY (SCHOOLS AND FAMILY)



CENTER FOR ARKANSAS
HISTORY AND CULTURE
UNIVERSITY OF ARKANSAS AT LITTLE ROCK



Photo 3: Group portrait of John D. Rockefeller Sr.'s family, ca. 1918-1930s (Winthrop Rockefeller Collection)



Photo 4: The Furushiro family pose for a group portrait in front of the Jerome Relocation Center. Lily Furushiro is second far left in back next to her husband, Bill; Lily's father, Yoshito Furushiro, is in center front, seated; Lester is being held; and Ronnie is seated front right, 1942 (Life Interrupted Collection, 1903-2005)

CHRONOLOGY (SCHOOLS AND FAMILY)



CENTER FOR ARKANSAS
HISTORY AND CULTURE
UNIVERSITY OF ARKANSAS AT LITTLE ROCK

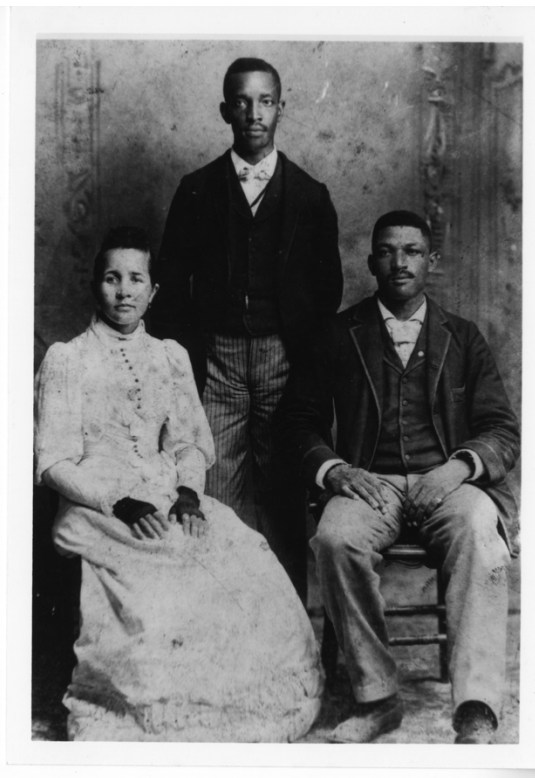


Photo 5: The Todd family poses for a portrait, including James R. Todd (husband), Corine S. Todd (wife), and Alfred Todd (twin brother), ca. 1890 (African Americans photograph collection, ca. 1890-1954)



Photo 6: The Burns family: Bob Burns, Mrs. Burns, Farrar Burns, ca. 1900 (Arkansas Small Manuscripts Collection, 1823-1986)

CHRONOLOGY (SCHOOLS AND FAMILY)



CENTER FOR ARKANSAS
HISTORY AND CULTURE
UNIVERSITY OF ARKANSAS AT LITTLE ROCK



Photo 7: Ferdinand Kanis and family pose for a portrait. Clockwise starting from his left is Emelia Louise, his wife; Margarethe Wilhelmina Thoma; John Ferdinand; Katherine Margarethe "Minnie," and Edward, ca. 1890 (Arkansas German Families photograph collection, ca. 1900-1944)



SEASON'S
GREETINGS
AND
BEST WISHES
FOR A
HAPPY
NEW YEAR

Photo 8: Season's Greetings card featuring a family photograph of Jim Guy, Betty, Sarah, and Anna Tucker, ca. 1992 (Governor James Guy Tucker, Jr., Papers)