

TRANSPORTATION OVER TIME



Transportation Over Time

Introduction

In this activity, you will look at old black and white photos that show different kinds of transportation across time. These photos will help us learn how transportation changed over time.

Questions:

Examine each photo and answer the following questions:

1. When was this photo taken?
2. What means of transportation is in the photo?
3. For what is the means of transportation in the photo used?
4. Do we still use the means of transportation that you see in the photo?
5. Does the means of transportation that you see in the photo look the same today? Are cars, bicycles, motorcycles, etc. today like those in the photo?
6. Describe people in the photo. How old are they? What are they doing? What are they wearing? Do we wear similar clothes today?

TRANSPORTATION OVER TIME



CENTER FOR ARKANSAS
HISTORY AND CULTURE
UNIVERSITY OF ARKANSAS AT LITTLE ROCK

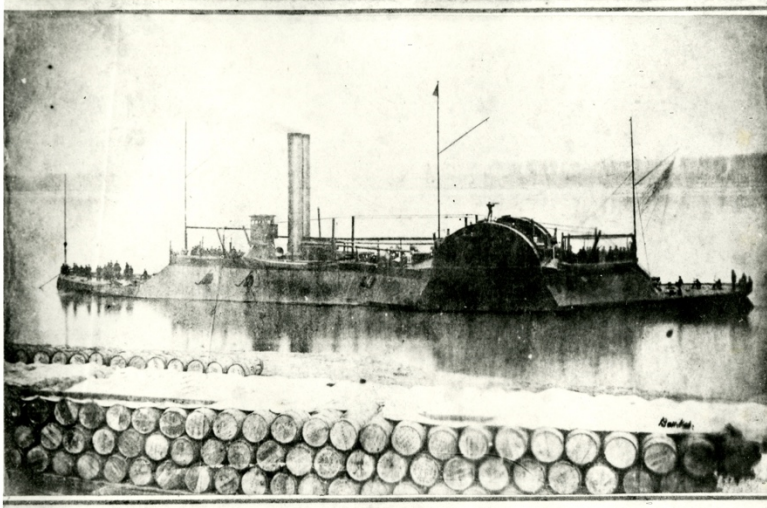


Photo 1: Steamboat U.S.S. Eastport, 1864 (Civil War: Gunboats and Steamboats Photograph Collection, 1861-1865)

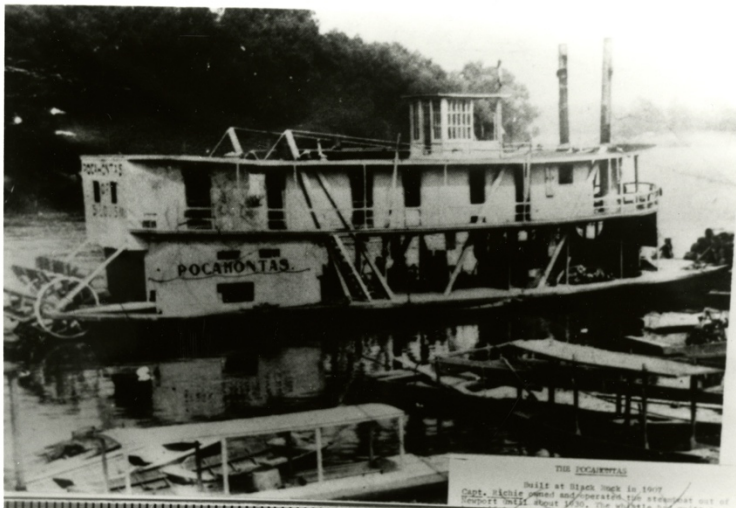


Photo 2: Steamboat Pocahontas built at Black Rock in 1907 and operated out of Newport until ca. 1930, 1907 (Rivers, Landings, and Riverboats Photograph Collection, ca. 1880-1927)

TRANSPORTATION OVER TIME



CENTER FOR ARKANSAS
HISTORY AND CULTURE
UNIVERSITY OF ARKANSAS AT LITTLE ROCK



Photo 3: Delivery wagon for the Ceylon Tea Company sits outside house in Fort Smith, ca. 1900 (Business and Industry photograph collection, ca. 1860s-1970s)



Photo 4: A horse and carriage sit outside of E. R. Harris Barber shop at 202 Capitol Avenue in Little Rock, ca. 1912-1913 (Calvin Hanna Collection, ca. 1877-1950)

TRANSPORTATION OVER TIME



CENTER FOR ARKANSAS
HISTORY AND CULTURE
UNIVERSITY OF ARKANSAS AT LITTLE ROCK



Photo 5: Women cyclists in Forrest City, Arkansas, ca. 1890s (Women in Arkansas photograph collection, ca. 1850s-1980s)



Photo 6: Jim Guy Tucker riding tricycle on Stonewall Road, Little Rock, 1948 (James Guy Tucker, Jr., Papers)

TRANSPORTATION OVER TIME



CENTER FOR ARKANSAS
HISTORY AND CULTURE
UNIVERSITY OF ARKANSAS AT LITTLE ROCK



Photo 7: Seven people in automobile, 1900s (Mary Elizabeth Parker Photograph Collection, ca. 1980s-1910s)



Photo 8: Group of women in a 1907 or 1908 two-cylinder Maxwell automobile, not dated, ca. 1910s (Transportation Photograph Collection, ca. 1880-1945)

TRANSPORTATION OVER TIME



CENTER FOR ARKANSAS
HISTORY AND CULTURE
UNIVERSITY OF ARKANSAS AT LITTLE ROCK



Photo 9: Man in driving clothes next to 1912 Ford Model T automobile at Quail's Motel in Van Buren, not dated, ca. 1910s (Transportation Photograph Collection, ca. 1880-1945)

TRANSPORTATION OVER TIME



CENTER FOR ARKANSAS
HISTORY AND CULTURE
UNIVERSITY OF ARKANSAS AT LITTLE ROCK



Photo 10: E. M. Shipley of Fort Smith on an early model Indian motorcycle, not dated, ca. 1910s (Transportation Photograph Collection, ca. 1880-1945)



Photo 11: Ben Walker and unidentified man on motorcycle in Fort Smith, ca. 1920s (Transportation Photograph Collection, ca. 1880-1945)

TRANSPORTATION OVER TIME



CENTER FOR ARKANSAS
HISTORY AND CULTURE
UNIVERSITY OF ARKANSAS AT LITTLE ROCK



Photo 12: Two men and biplane,
not dated, ca. 1910s
(Transportation Photograph
Collection, ca. 1880-1945)



Photo 13: Fort Smith and Western
locomotive no. 17, Ed Krause as
conductor, Fort Smith, before 1920
(Transportation Photograph
Collection, ca. 1880-1945)