

## CHRONOLOGY (SCHOOLS AND FAMILY)



### Chronology (Schools and Family)



Photo 1: School group probably in Crawford County or Madison County, 1880s (Education Photograph Collection)



Photo 2: School group in Uniontown, 1910 (Education photograph collection, ca. 1880-1930)

## CHRONOLOGY (SCHOOLS AND FAMILY)



CENTER FOR ARKANSAS  
HISTORY AND CULTURE  
UNIVERSITY OF ARKANSAS AT LITTLE ROCK



Photo 3: School children at Belle Point School in Fort Smith, 1890-1895 (Education photograph collection, ca. 1880-1930)



Photo 4: Rubeye Nichols Lambert with Lambert Wing School students in Sheridan, 1938 (African Americans photograph collection, ca. 1890-1954)

## CHRONOLOGY (SCHOOLS AND FAMILY)



Photo 5: Students stand outside of school for African American children in Fayetteville, Arkansas, not dated, ca. 1870s-1890s (F. P. Rose Photograph Collection, 1820-1961)



Photo 6: First and second grade class portrait in Huntington, 1926 (Education photograph collection, ca. 1880-1930)

## CHRONOLOGY (SCHOOLS AND FAMILY)



CENTER FOR ARKANSAS  
HISTORY AND CULTURE  
UNIVERSITY OF ARKANSAS AT LITTLE ROCK



Photo 1: The Edward Nichols family pose for a portrait. Individuals include: back row, left to right: Robert, Rubye, Calvin, Carri, Edward, Jr., J. W; front row, left to right: Floyd, Gladys, Lena, Edward, Sr., Lloyd, child on small stool, Lucy, Dal Royce sitting on Lucy's lap, and Cleo, 1930s (African Americans photograph collection, ca. 1890-1954)



Photo 2: A portrait of the Rockefeller family (extended) gathered at Christmas., 1955 (Winthrop Rockefeller Collection)

## CHRONOLOGY (SCHOOLS AND FAMILY)



CENTER FOR ARKANSAS  
HISTORY AND CULTURE  
UNIVERSITY OF ARKANSAS AT LITTLE ROCK



Photo 3: Group portrait of John D. Rockefeller Sr.'s family, ca. 1918-1930s (Winthrop Rockefeller Collection)



Photo 4: The Furushiro family pose for a group portrait in front of the Jerome Relocation Center. Lily Furushiro is second far left in back next to her husband, Bill; Lily's father, Yoshito Furushiro, is in center front, seated; Lester is being held; and Ronnie is seated front right, 1942 (Life Interrupted Collection, 1903-2005)

## CHRONOLOGY (SCHOOLS AND FAMILY)



CENTER FOR ARKANSAS  
HISTORY AND CULTURE  
UNIVERSITY OF ARKANSAS AT LITTLE ROCK

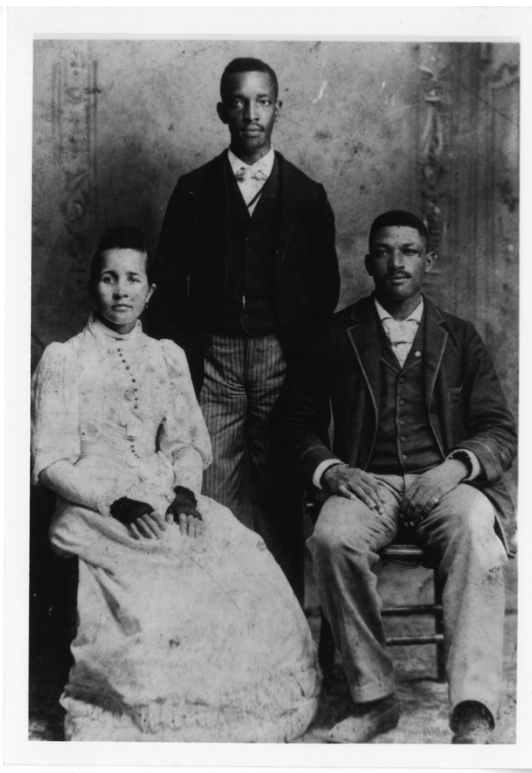


Photo 5: The Todd family poses for a portrait, including James R. Todd (husband), Corine S. Todd (wife), and Alfred Todd (twin brother), ca. 1890 (African Americans photograph collection, ca. 1890-1954)



Photo 6: The Burns family: Bob Burns, Mrs. Burns, Farrar Burns, ca. 1900 (Arkansas Small Manuscripts Collection, 1823-1986)

## CHRONOLOGY (SCHOOLS AND FAMILY)



CENTER FOR ARKANSAS  
HISTORY AND CULTURE  
UNIVERSITY OF ARKANSAS AT LITTLE ROCK



Photo 7: Ferdinand Kanis and family pose for a portrait. Clockwise starting from his left is Emelia Louise, his wife; Margarethe Wilhelmina Thoma; John Ferdinand; Katherine Margarethe "Minnie," and Edward, ca. 1890 (Arkansas German Families photograph collection, ca. 1900-1944)



SEASON'S  
GREETINGS  
AND  
BEST WISHES  
FOR A  
HAPPY  
NEW YEAR

Photo 8: Season's Greetings card featuring a family photograph of Jim Guy, Betty, Sarah, and Anna Tucker, ca. 1992 (Governor James Guy Tucker, Jr., Papers)