

FROM TREES TO LUMBER



CENTER FOR ARKANSAS
HISTORY AND CULTURE
UNIVERSITY OF ARKANSAS AT LITTLE ROCK

From Trees to Lumber



Photo 1: Man transporting log to Petit Jean sawmill, ca. 1904 (Lumber and Industry photograph collection, ca. 1904-1930)



Photo 2: Two men driving flatbed of lumber hauled by mules in Ashley County, Arkansas, not dated (Ashley County Scenes Photograph Collection, ca. 1900-1979)

FROM TREES TO LUMBER



CENTER FOR ARKANSAS
HISTORY AND CULTURE
UNIVERSITY OF ARKANSAS AT LITTLE ROCK



Photo 3: Group of workers posing with saws, not dated (Ashley County Scenes Photograph Collection, ca. 1900-1979)



Photo 4: Group portrait of unidentified saw crew in Ashley County, not dated (Ashley County Scenes Photograph Collection, ca. 1900-1979)

FROM TREES TO LUMBER



CENTER FOR ARKANSAS
HISTORY AND CULTURE
UNIVERSITY OF ARKANSAS AT LITTLE ROCK



Photo 5: Logs being loaded onto train cars in Ashley County, Arkansas, not dated (Lumber and Industry photograph collection, ca. 1904-1930)



Photo 6: Train transporting flat cars of logs in Ashley County, not dated (Ashley County Scenes Photograph Collection, ca. 1900-1979)

FROM TREES TO LUMBER



CENTER FOR ARKANSAS
HISTORY AND CULTURE
UNIVERSITY OF ARKANSAS AT LITTLE ROCK

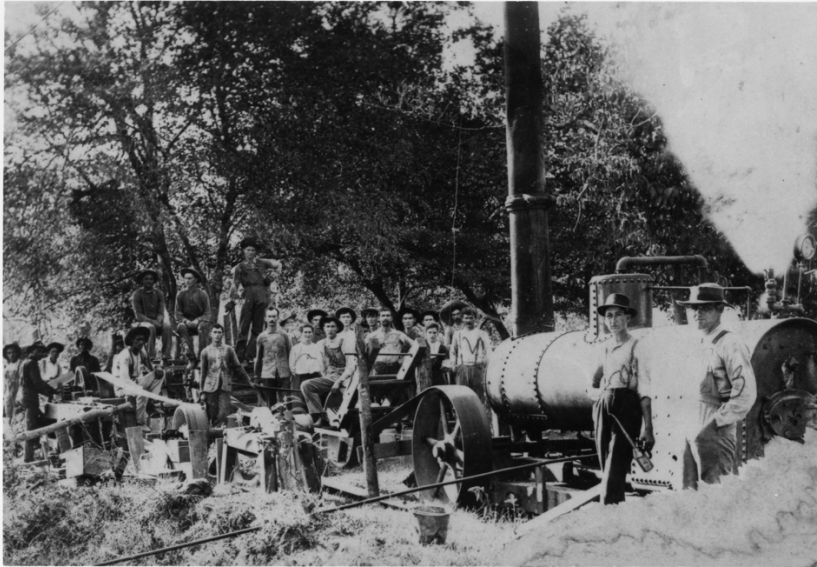


Photo 7: A steam-powered sawmill operation in southwest Arkansas, possibly on the Little Missouri River, not dated (Lumber and Industry photograph collection, ca. 1904-1930)