

# PEOPLE AND MACHINES



CENTER FOR ARKANSAS  
HISTORY AND CULTURE  
UNIVERSITY OF ARKANSAS AT LITTLE ROCK

## People and Machines



Photo 1: Train at railroad station with passengers and workers onboard, Hot Springs, ca. 1893 (Hot Springs Buildings Photograph Collection, 1893-1905)

## PEOPLE AND MACHINES



CENTER FOR ARKANSAS  
HISTORY AND CULTURE  
UNIVERSITY OF ARKANSAS AT LITTLE ROCK



Photo 2: Unidentified railroad crew in Ashley County, Arkansas, not dated/ca. early 1900s (Ashley County Scenes Photograph Collection, ca. 1900-1979)

## PEOPLE AND MACHINES



CENTER FOR ARKANSAS  
HISTORY AND CULTURE  
UNIVERSITY OF ARKANSAS AT LITTLE ROCK



Photo 3: An advertising postcard for L. A. Amis, a typewriter shop in Fort Smith, ca. 1900 (Business and Industry photograph collection, ca. 1860s-1970s)

## PEOPLE AND MACHINES



CENTER FOR ARKANSAS  
HISTORY AND CULTURE  
UNIVERSITY OF ARKANSAS AT LITTLE ROCK

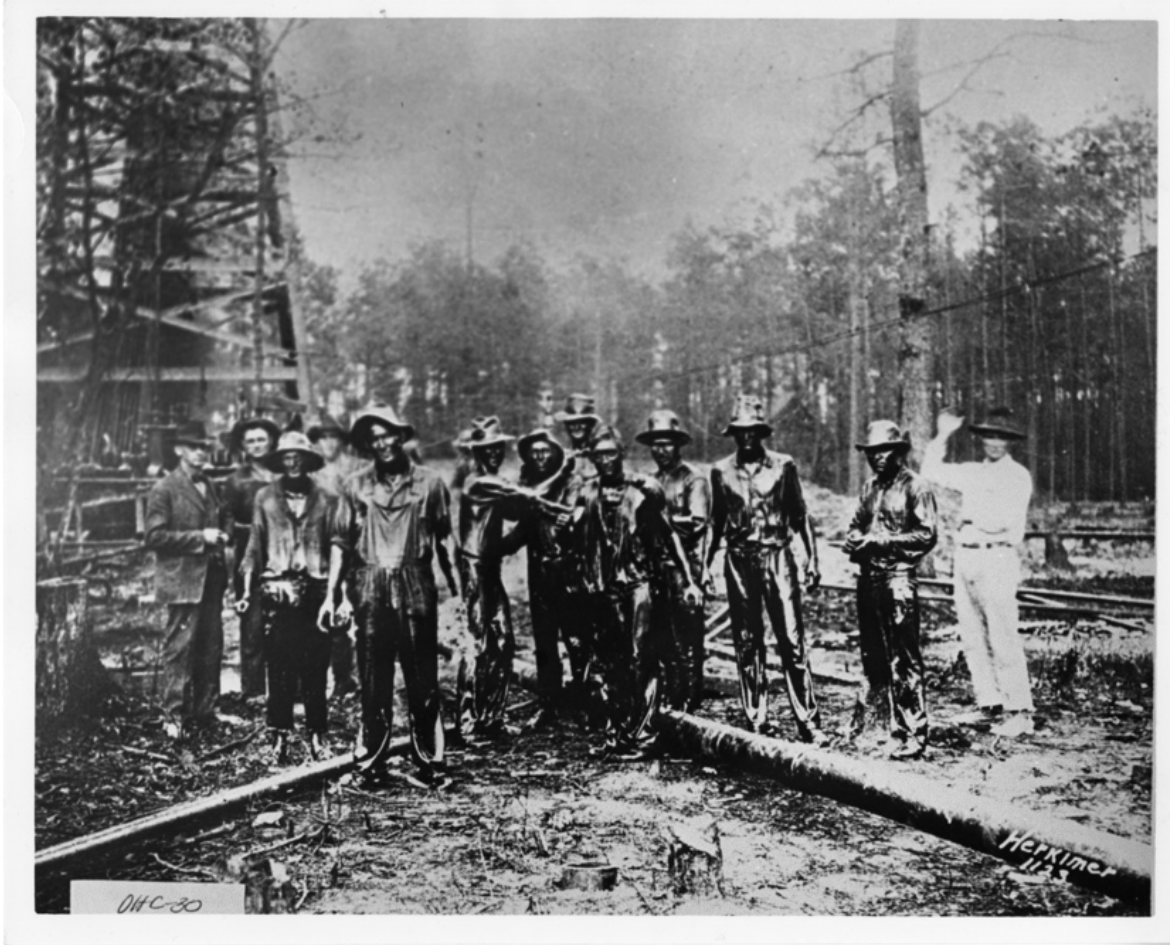


Photo 4: Drilling crew covered with oil in Smackover oil field, not dated/ca. 1920s/1930s (Oil Industries of Arkansas Photograph Collection, ca. 1920s-1939)

## PEOPLE AND MACHINES



CENTER FOR ARKANSAS  
HISTORY AND CULTURE  
UNIVERSITY OF ARKANSAS AT LITTLE ROCK



Photo 5: Employees pose in front of Cates Motor Service in Fort Smith, ca. 1930s (Business and Industry photograph collection, ca. 1860s-1970s)